

FST-CDT Intelligent Battery Regenerator

-Charger+ Discharger +Regeneration Function

FST-CDT Battery charge/discharge tester is integrated with constant current discharging, cell voltage collection and intellectualized charging, it provides comprehensive scientific test methods for stationary battery and UPS Power system and is widely applied in the field of Telecommunications, Base station and Utilities etc.

◆Main Features & Function:

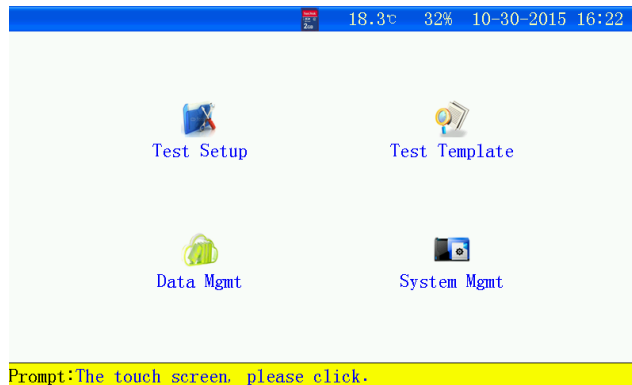
Stationary Battery String Charge/Discharge all in-one-machine = Constant Current Discharge + Intelligent Charge + Cell Voltage Collection + Stationary string Regeneration

- ① Discharge voltage as 40-60VDC,
- ② Charge voltage as 2-60VDC
- ③ Cell voltage as 1.2V/2V/4V/6V/12V
- ④ 4 adjustable stop points and multiple alarms
- ⑤ 7inch LCD touch screen for easy operation
- ⑥ PC software for capacity evaluation and report generation
- ⑦ Constant current and constant power.



Constant current discharge, Intelligent charge in three phases and real time collecting cell parameters on line, to setup voltage, current, time and capacity on the LCD, Automatically finishing all the tests under setup. Monitoring, Regeneration, on line or offline monitoring the voltage of battery string and cell voltage.

7" colourful LCD touch screen



- 1、 Easy to operate: All input is simple English menu, humanized operation, clear procedure, every step and interface will give user brief tips avoid incorrect operation fundamentally
- 2、 Charging & Discharging Test Interface:

Discharge setting 18.8°C 49% 10-18-2015 09:30

Setting information					
RoomNo	0001	StringNo	01	StringNum	1
StringType	48V	CellType	2V	CellNum	24
NominalCap	100Ah	CellOrder	From -	Dis.Method	Const-I
Dis.H.R	10h			I-Descarga	10.0A
Condic.Fin.Prueba					
UMinString	43.20V	UMinCell	1.800V		
CellTotal	2	CellVolt.	Alarm		
C-Discharge	100Ah	T-Discharge	10:00(H:M)		
OK			ESC		

Prompt:The touch screen. please click.

Charge setting 19.7°C 23% 06-09-2014 16:07

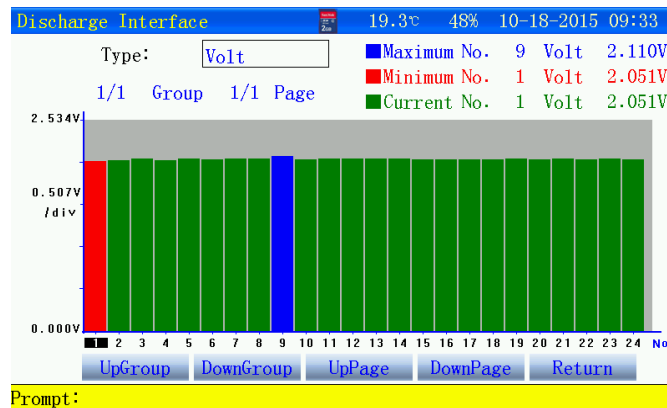
Setting information					
RoomNo	0001	StringNo	01	StringNum	1
StringType	48V	CellType	2V	CellNum	24
NominalCap	100Ah	CellOrder	From -		
Charge Parameters					
U-Uniform	57.00V	U-Float	53.00V	I-Charge	10.0A
I-Float%	10%				
Condic.Fin.Prueba					
UMaxCell	0.000V	CellVolt.	Alarm		
C-Charge	100Ah	T-Charge	10:00(H:M)		
OK			ESC		

Prompt:The touch screen. please click.

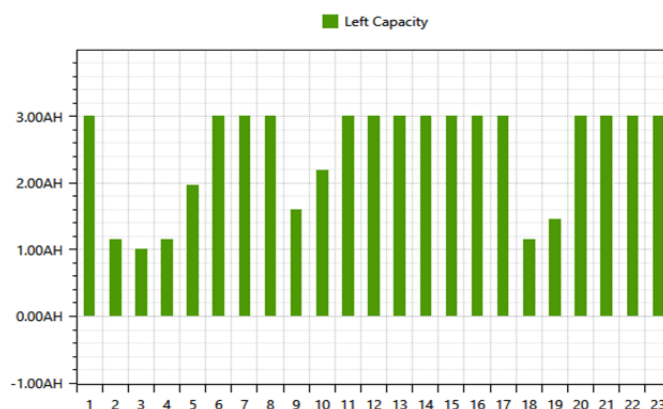
Monitoring .			
Alarm-condition			
UMaxString	UMinString	UMaxCell	UMinCell
57.60V	43.20V	2.400V	1.800V
Informacion Test			
U-String	48.30V	I-String	119.5A
C-Charge	--	C-Discharge	--
MonitorTime	0:01	Capacity	3.3Ah
UMaxCell-1	2.112V	UMinCell-1	2.053V
UMaxCell-2	--	UMinCell-2	--
View Settings	View Cell	Mute	ESC

Prompt:Monitoring...

- 3、 *Histogram and curve analysis* The instruments can analyze according to main test function on the histogram and the curve chart. It's unnecessary to upload the result in PC.



- 4、 Tester host integrated monitoring part and power part together, and power part adopted latest hi-efficiency components
- 5、 Adopted new special low-heat hi-efficiency loading material and advanced control technology ensure the higher constant current precision.
- 6、 *Powerful analyze function of PC software* Providing data management, print, analyze, count report, automatic generate test report. Amplify or minify the voltage curve for easy observation.



The auto-test and protection function: During test if we find whole battery set or single battery have any problem test will stop automatically to avoid any further damage and completely prevent shock on the device; test can be cut off according to actual condition

Technical Specifications

Type	FST-CDT48V
Test mode of Charge-Discharge	Battery String removing from the System
Control mode	CV(Constant Current) , CC(Constant Current) CP(Constant power)
Discharge Current	0~ 100A
Discharge Current Accuracy	Resolution: 0.1A Accuracy: 1A
Charge Current	0~ 100A
Charge Current Accuracy	Resolution: 0.1A Accuracy: 1A
Discharge Voltage	40~60V
Discharge Voltage Accuracy	Resolution: 10mV Accuracy: 0.1V
Charge Voltage	2~60V
Charge Voltage Accuracy	(Resolution: 10mV Accuracy: 0.1V)
Cell Voltage of Charge-Discharge	0.500V~16.00V (Resolution :1mV Accuracy 10mV)
Time of Charge-Discharge	0~99h59min
Number of Cell	Set according to the actual situation
Cooling Mode	Forced air cooling type
Discharge Load	High performance alloy resistance
Display	7" Color Touch Screen
Power Supply	220VAC or AC:380V
Alarm and safety measures	Reverse connection protection, over voltage and over current protection; Abnormal temperature, Fan Fault etc。 the tester can alarm and stop the test

PACKING LISTS

Item	Descriptions	Qty	Unit	Remark
1	Battery Charge and Discharge Tester	1	Unit	
2	220V/380V AC cable	1	PC	
3	DC Cable (Red+ , Black-)	1	SET	
4	Pack Voltage cable	1	PC	
5	Wireless Cell voltage monitoring module	2	PC	Optional The price of Wireless cell voltage module is 195.00USD/PC, Each module can collect and monitor 24cells.
6	Cell voltage collection cable	2	SET	
7	User Manual	1	PC	
8	Product certificate	1	PC	
9	SD Card/Card reader/Touch Pen	1	SET	
10	Alloy Carrying Case	1	PC	